



Quality Matters...

Assessing the implementation quality of mental health promotion in educational settings



Australian Government
Department of Health and Ageing



Dr Katherine Dix

Overview

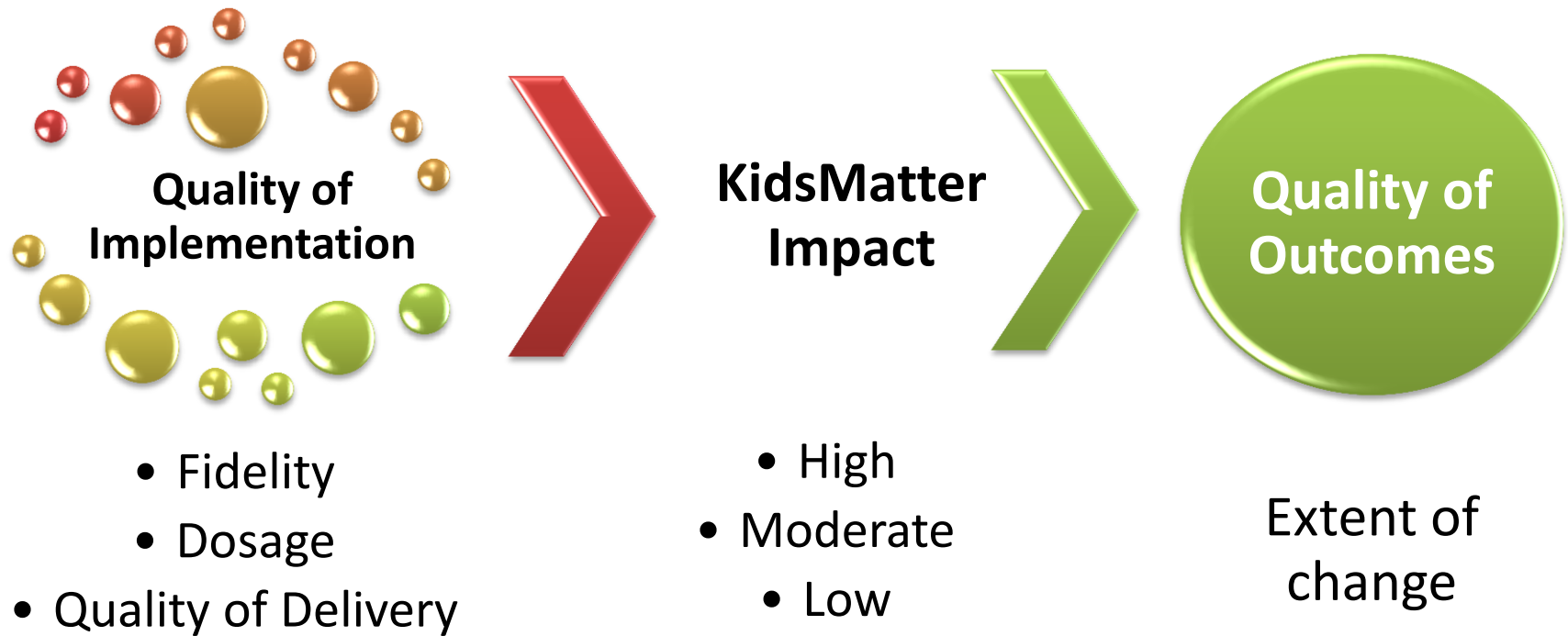
assessing
quality

developing
an Index

factors
↓
quality
↓
outcomes

ongoing
quality
monitoring

The science of implementation

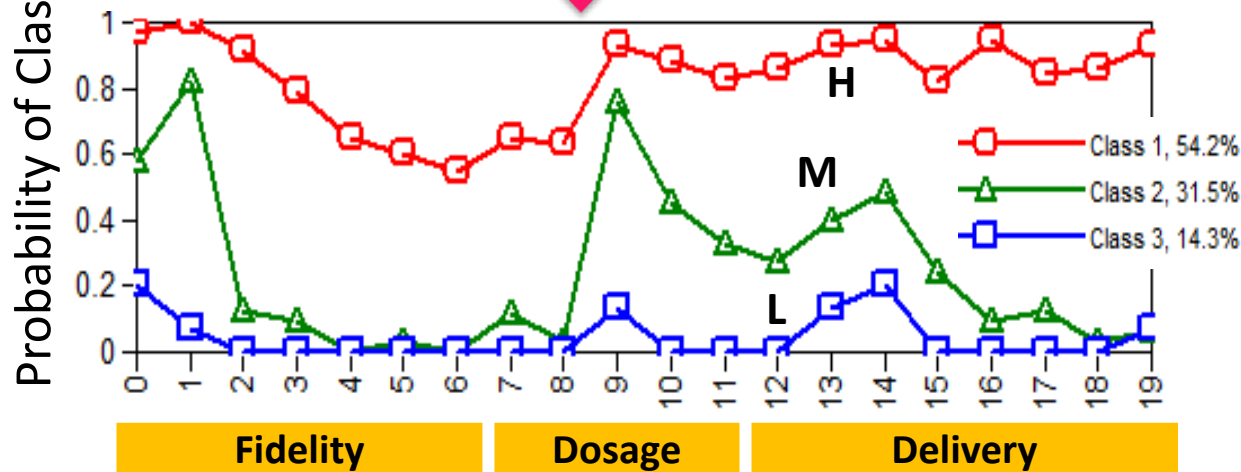
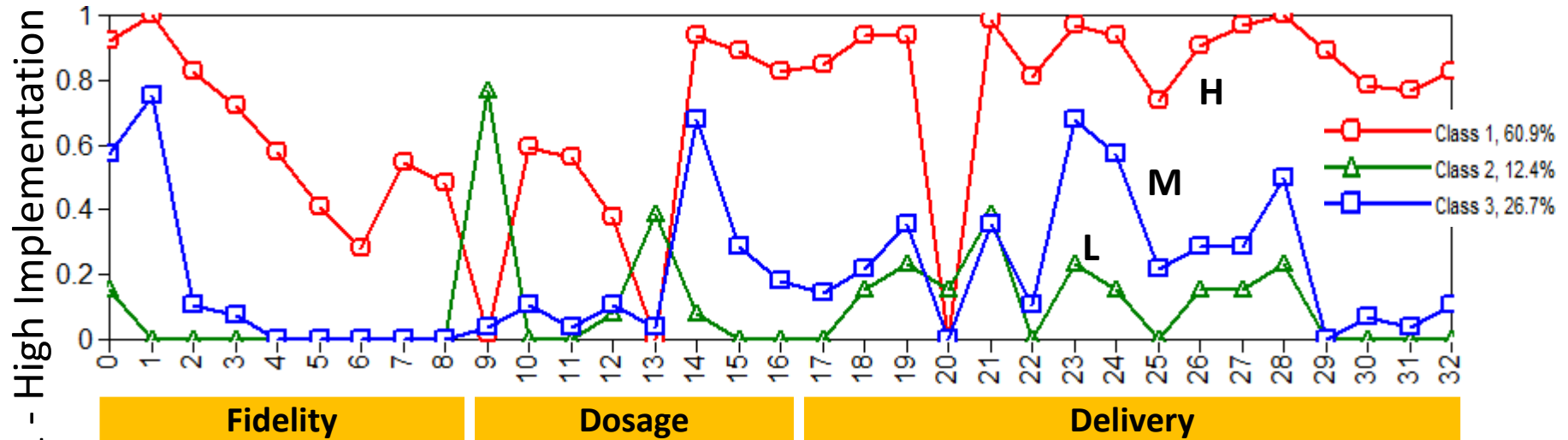


Developing an index

	Staff and Parent Views	Project Officer Views
FIDELITY Degree to which an intervention is conducted as planned	Implementation process; Delivery of SEL	7-Step Implementation Process
DOSAGE Specific units of an intervention and resources	Time to plan & implement; Leadership participation; Amount of PD	Contact with leadership; Provision of info to parents
DELIVERY Engagement with the process and support responsiveness	Staff rating of PD; Parent engagement	Leadership, staff & parent encouragement and involvement

Domitrovich et al. (2008)

Assessing quality using LCA



33 candidate items

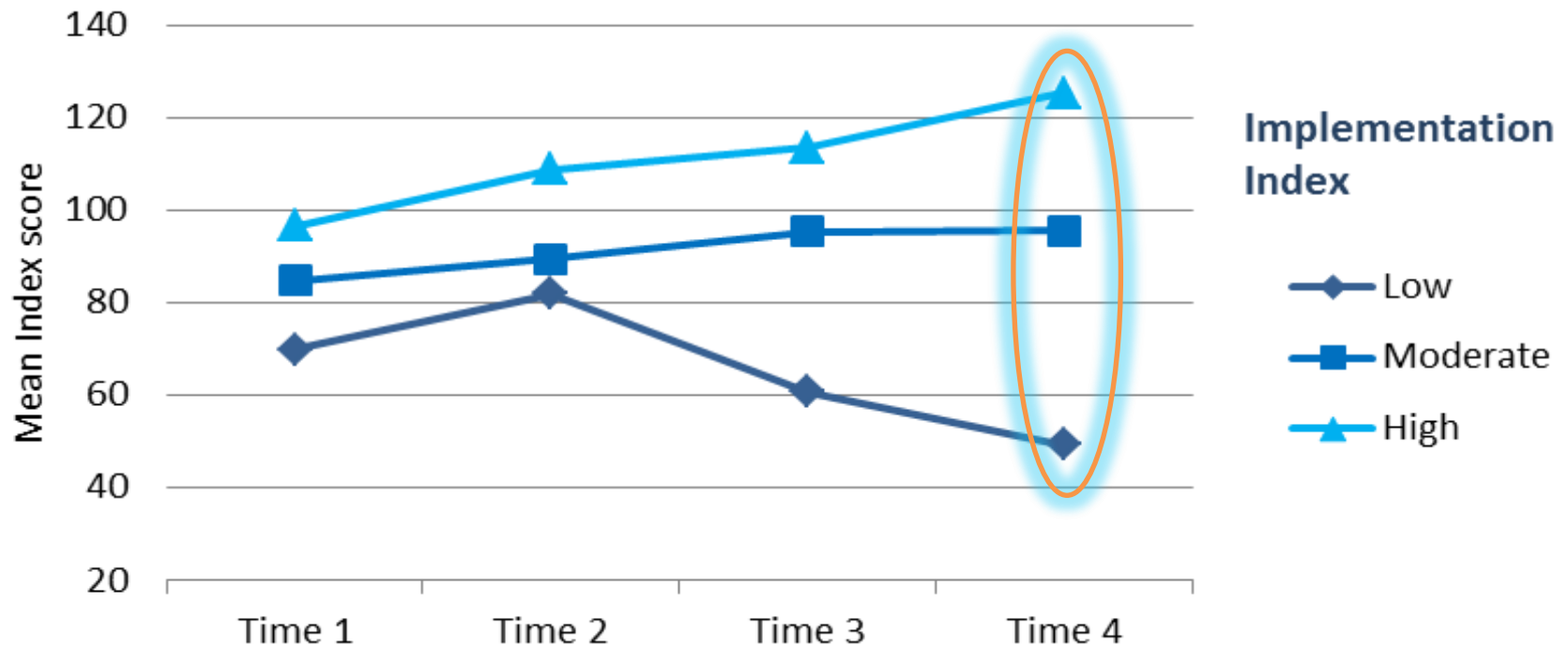
trim 'crossovers'

20 best items

Different Index trajectories

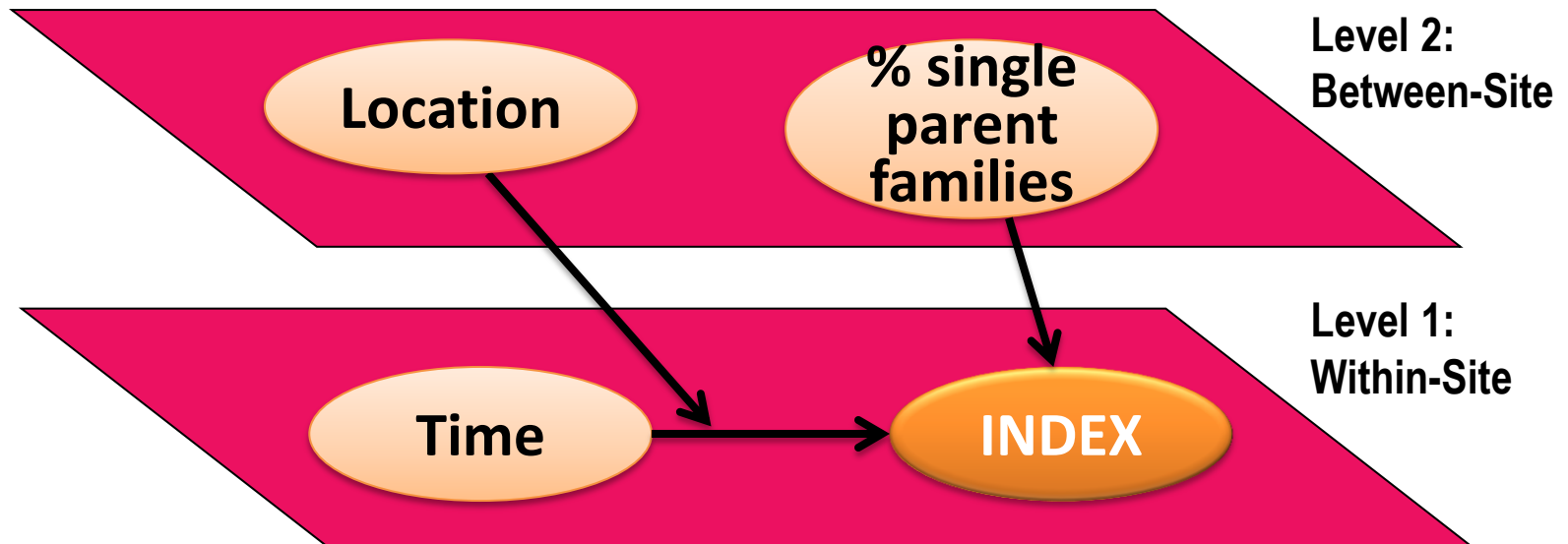
KidsMatter Early Childhood example (2010-2011)

- Summed scores across 20 items on each occasion
- Mean score of services in each Index category



Factors effecting implementation quality

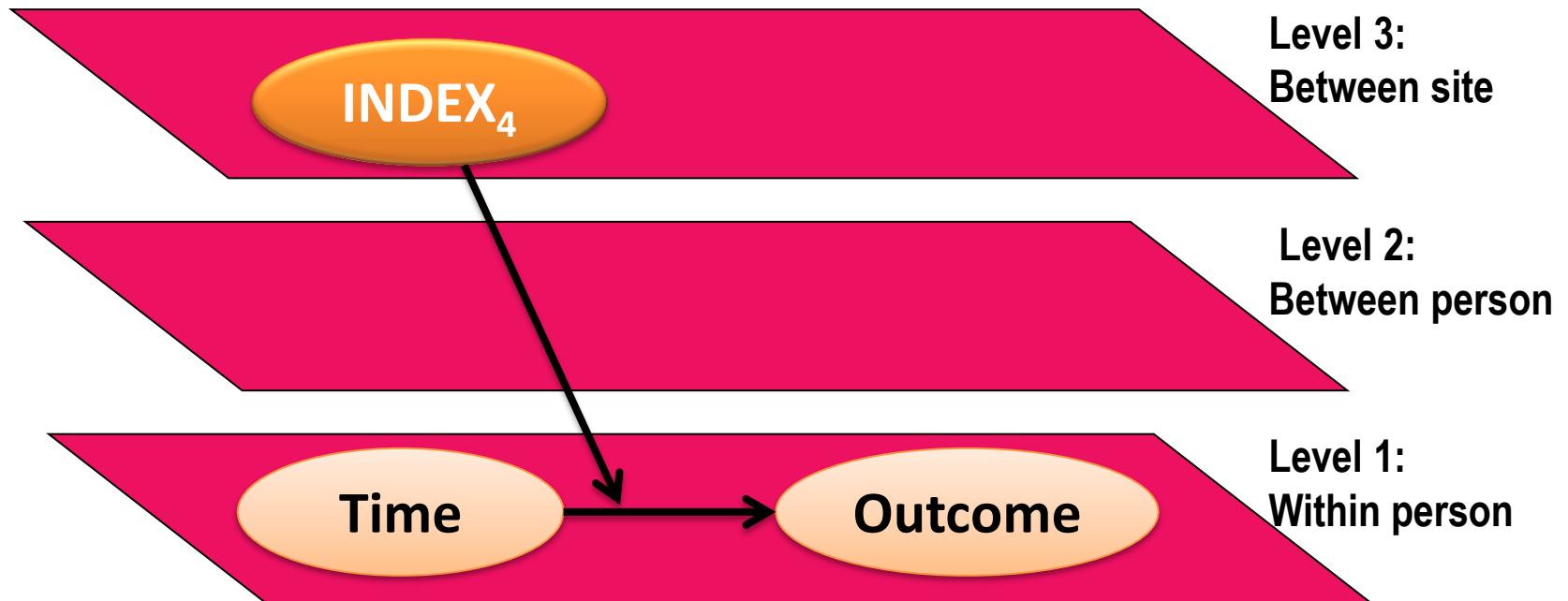
Using 2-level hierarchical linear modelling (HLM6)
KidsMatter Early Childhood example (2010-2011)



- ✓ Rural and remote location
- ✓ Low % of single parent families
- ✗ Not significant: Aboriginal context, service types, low SES

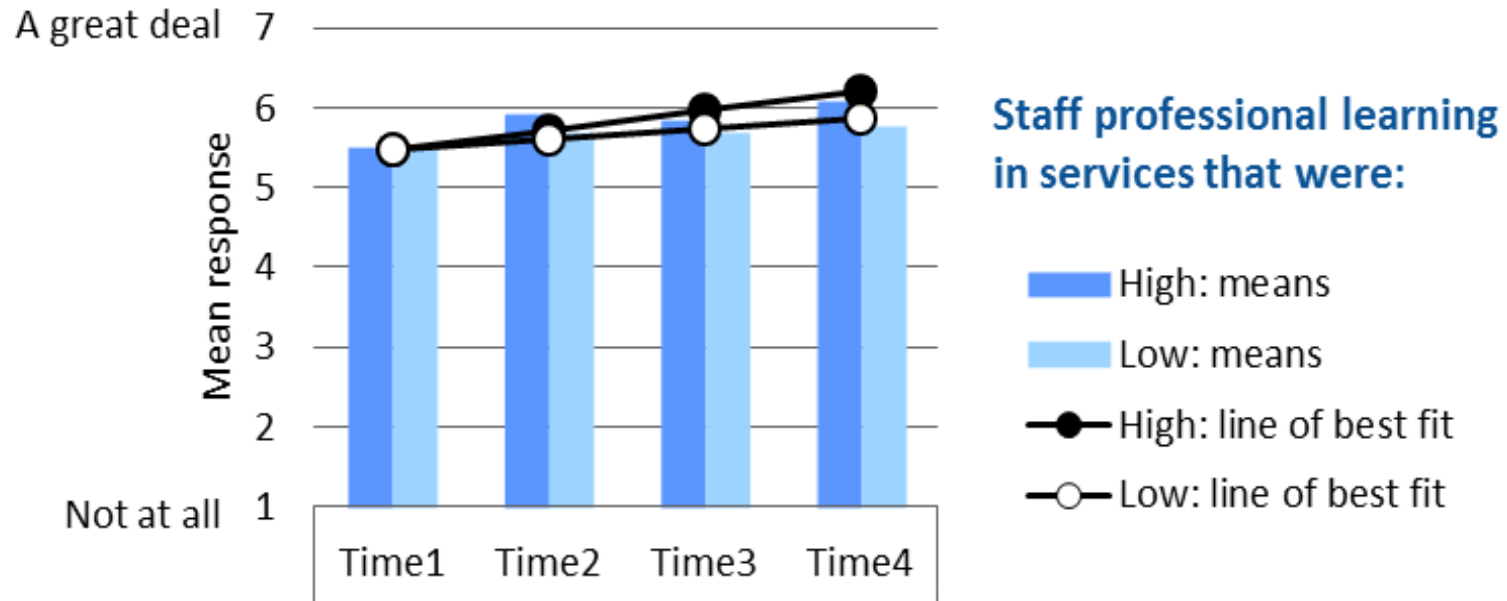
Implementation quality effecting outcomes

Using 3-level hierarchical linear modelling (HLM6)



Example: Change in PD over time

KidsMatter Early Childhood example (2010-2011)



Staff (n=365)	Implementation	Significance p	r	effect size
	High	***	0.26	medium
	Low	***	0.17	small

Example: Different NAPLAN outcomes

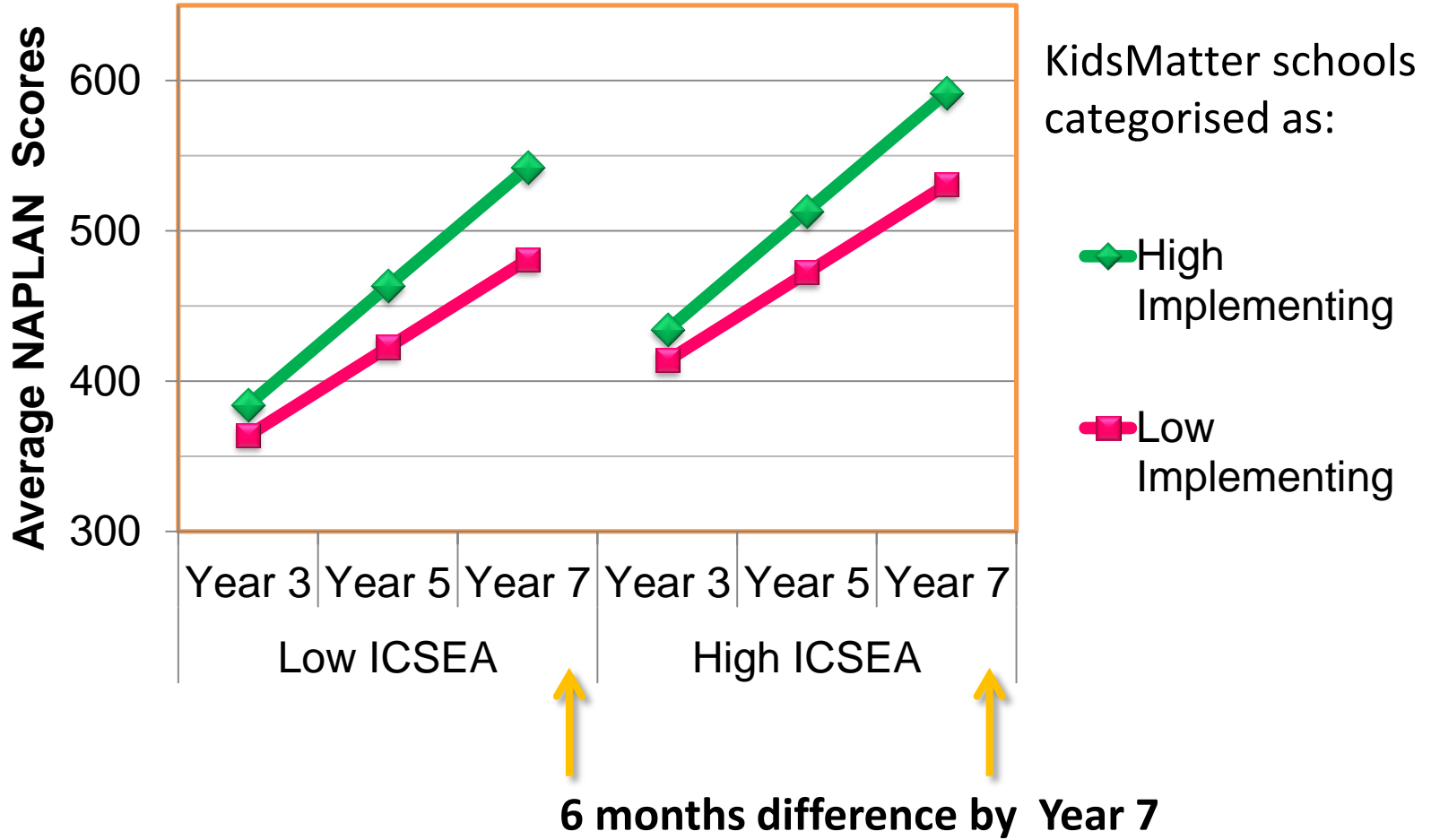
My School

2008		2009		2010							
Red & Green										Show results in graphs	
	Reading		Writing		Spelling		Grammar & Punctuation		Numeracy		
Year 3	401		418		404		403		383		
	387 - 415		406 - 430		391 - 417		388 - 418		370 - 396		
	SIM	ALL	SIM	ALL	SIM	ALL	SIM	ALL	SIM	ALL	
	395	400	411	414	394	400	397	403	392	397	
	386 - 404		403 - 419		385 - 403		387 - 407		384 - 400		
Year 5	483		466		479		488		444		
	471 - 495		454 - 478		468 - 490		475 - 501		433 - 455		
	SIM	ALL	SIM	ALL	SIM	ALL	SIM	ALL	SIM	ALL	
	479	484	482	486	479	484	489	496	470	476	
	470 - 488		474 - 490		471 - 487		480 - 498		462 - 478		
Year 7	532		542		536		530		525		
	521 - 543		529 - 555		524 - 548		517 - 543		514 - 536		
	SIM	ALL	SIM	ALL	SIM	ALL	SIM	ALL	SIM	ALL	
	532	536	529	534	532	539	524	529	538	545	
	525 - 539		520 - 538		524 - 540		515 - 533		530 - 546		

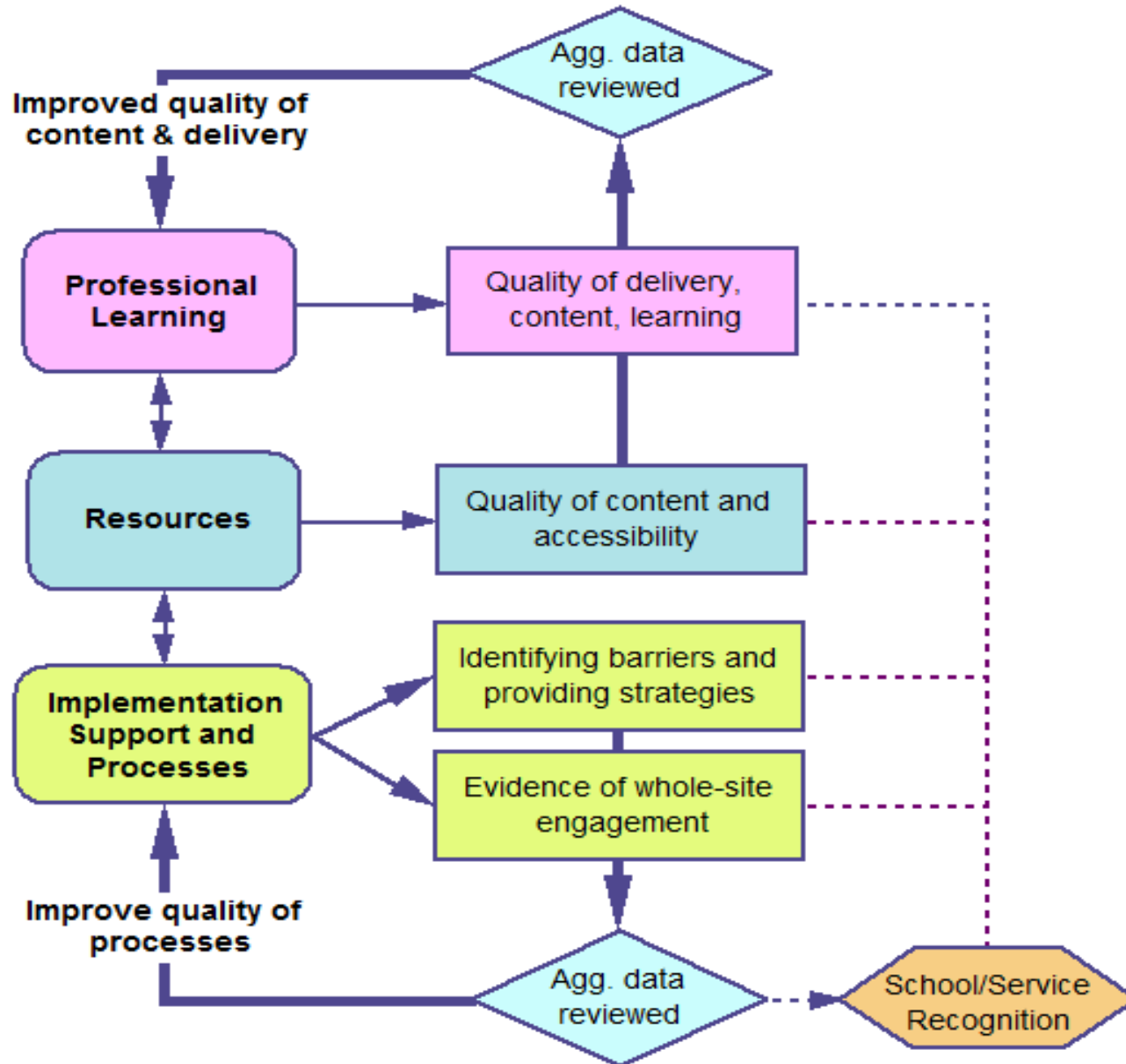
myschool.edu.au

Example: Different NAPLAN outcomes

KidsMatter Primary example (2008-2009)



Sustaining quality implementation



Questions

katherine.dix@pai.edu.au

